

LTE SERIES

H.264 Reliable Real-time Digital Video Recorder

Dual Streaming
Auto Bandwidth Control for Client

Universal Plug and Play supported
No more need for port-forwarding



Supports PDA Viewer and Smart Phone



• True Pentaplex Operation Performance - Live / Record / Playback / Archive / Network

• Real-time Recording speed up to 480FPS @ CIF

• Independent Resolution, FPS, Quality and Audio setting per channel

• Record Time Limit

• Quick & Easy playback function
(Forward & Reverse, Max. 64x)

• Powerful Search Mode(Calendar, Event Search)

• G.M.T Time zone & D.S.T supported

• Remote PTZ control supported

• Two way audio communications supported

• Various Archiving Devices supported - USB device, Network

• Flexible Network supported (Static IP, DHCP, DDNS)

• Auto Port Forwarding by uPNP

• Remote Live viewing, searching, configuration, archiving

• Easy firmware upgrade via USB

• Alarm in/Motion Detection/Video Loss/HDD SMART

• E-mail notification, Video Pop-up

• 3G Phone supported

• E-mail notification, Video Pop-up

• Auto Bandwidth Control

• CMS Support

Web Remote Viewer Simple and Easy

• Supports all current internet browsers

- Microsoft Internet Explorer

- Mozilla Firefox

- Apple Safari

- Google Chrome



Live View



Web Search

Professional CMS Advanced Multi DVR Client

• Monitoring 64 channels on one screen using multiple DVR systems

• Live screen display for each screen type

• E-Map mode for surveillance

• Remote recording and remote backup function

• Event logging and view function for Alarm control
(Motion, Sensor, Site Connection logs)

• PTZ Control



CMS Live Monitor



CMS Search



CMS Layout



CMS E-Map

Lite Series 4/8/16Ch H.264 Digital Video Recorder

Dimensions

Top View

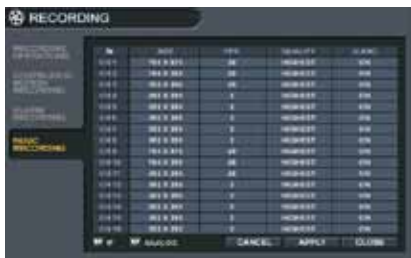


Back View

11.5"



GUI Overview



RECORDING SETUP



SEARCH



ARCHIVING

SPECIFICATION			
Model	LT-0424	LT-08	LT-16
Operating System	LINUX		
Triplex Function	Simultaneous Record/Playback/Network		
Video Compression	H.264 Codec		
Live Display Speed	240 fps	240 fps	480 fps
Recording Speed	240 fps @ CIF	240 fps @ CIF	480 fps @ CIF
Video Input	4CH(BNC)	8CH(BNC)	16CH(BNC)
Video Output	VGA monitor	1 SXGA(1024X768)	
	Sub monitor	1 Composite(BNC)	
	Spot-out	1 Composite(BNC)	
	Loop-out	None	
Screen Division	Live	1,4	1,4,6,8,9,16
	Playback	1,4	1,4,9,16
Audio In/Out	1 in(RCA)/ 1 out(RCA), CODEC: G.711 (64kbps)	4 in(RCA)/ 1 out(RCA), CODEC: G.711 (64kbps)	
Alarm In/Out	4 In/ 1 Out (relay)		
Storage	1 HDD		
Archive	USB Device(Thumb Drive) & Network		
USB Port	2 (1front & 1rear)		
PTZ & Keyboard control	RS-485		
System Control	USB Mouse, Front button, Remote controller & Keyboard controller		
Network	LAN, DHCP, Dynamic IP, DDNS		
Power	12V Adaptor, 3.3A, 50-60Hz		
Operating Temperature	0°C ~ 40°C		
Humidity	10 ~ 90% NC		
Dimension (mm)/Weight (kgs)	318 X 250 X 58(H), 1.3U CASE / 4 KGS		
Remote SW	CMS, Web RA, Smart Phone		
MAIN FEATURES			
LIVE DISPLAY			
OSD	On/Off		
Border Color	Selectable		
Digital Zoom	None		
SEARCH			
Calendar Search	Search by time		
Event Search	Search by event		
PLAYBACK			
Playback Speed	Variable Playback Speed (Max.64x)		
Playback Rate	120fps @ 360x240	240fps @ 360x240	480fps @ 360x240
Audio Play	Synchronized with Video		
SYSTEM			
Video Cover	Video will be hidden Live & Playback mode, but it will be recorded		
PTZ	Supported most of PTZ protocol, preset up to 255		
Motion Area Setting	Adjustable GRID(8X11), 10 Steps Sensitivity Level		
Time Synchronization	Auto Time Sync. by NTP server		
User Authority	Each User Group has different authority		
System Reliability	Watch-Dog, Auto-Recovery after power Failure		
Firmware Upgrade	Via USB device		
Configuration Export & Import	Setting configuration copy & paste to other DVR via USB		
S.M.A.R.T. Alarm	Auto-Detect & monitoring the HDD's problem		
RECORD			
Resolution Setting	By each camera for different resolution setting(CIF/2CIF/D1)		
Recording Quality Control	4 Levels (Low/Standard/High/Highest)		
Recording Schedule	By day, by hour, by recording mode, by alarm, by Channel		
Panic Record	Overrides all other recording settings to provide the best quality recording		
Pre-recording	Max. 5 seconds		
Post-recording	Max. 180 seconds		
ARCHIVE			
Archive Device	USB device		
File Format	AVI file		
Player	Backup player and Window Media Player		
NETWORK			
Network Support Type	LAN/DHCP/DDNS		
RTSP & Web Server Port	Programmable by User		
E-mail notification	E-mails to specific users to notify events		
System Configuration	Full setup configuration over network		
Bandwidth limit	Limitable the Network Bandwidth by User		
Two-Way Audio	Communication with RemoteSW		
Others			
Watermark	Watermarked Video & Audio for security (active only in backup player)		

MADE IN KOREA